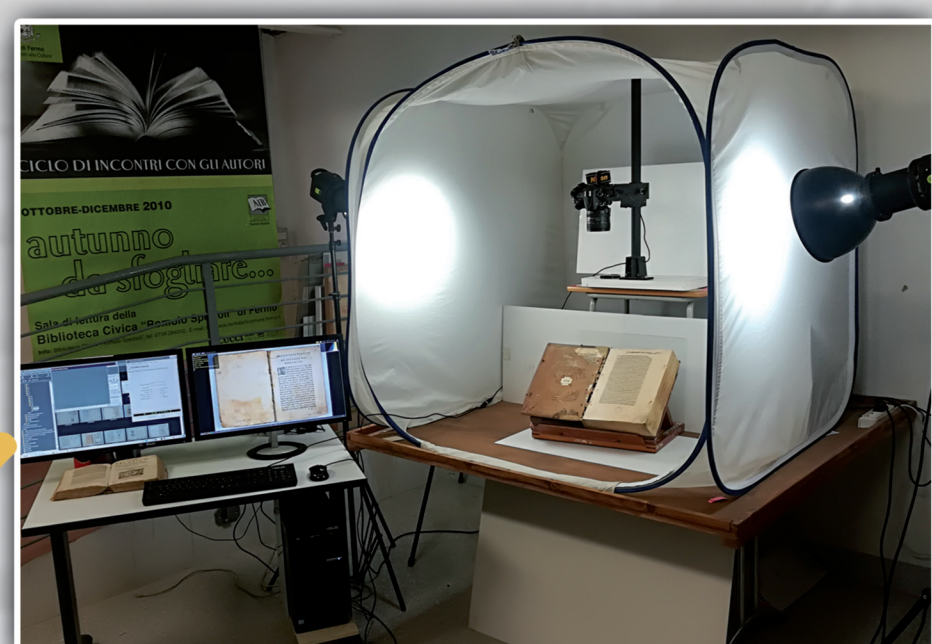


CONVERGENCY

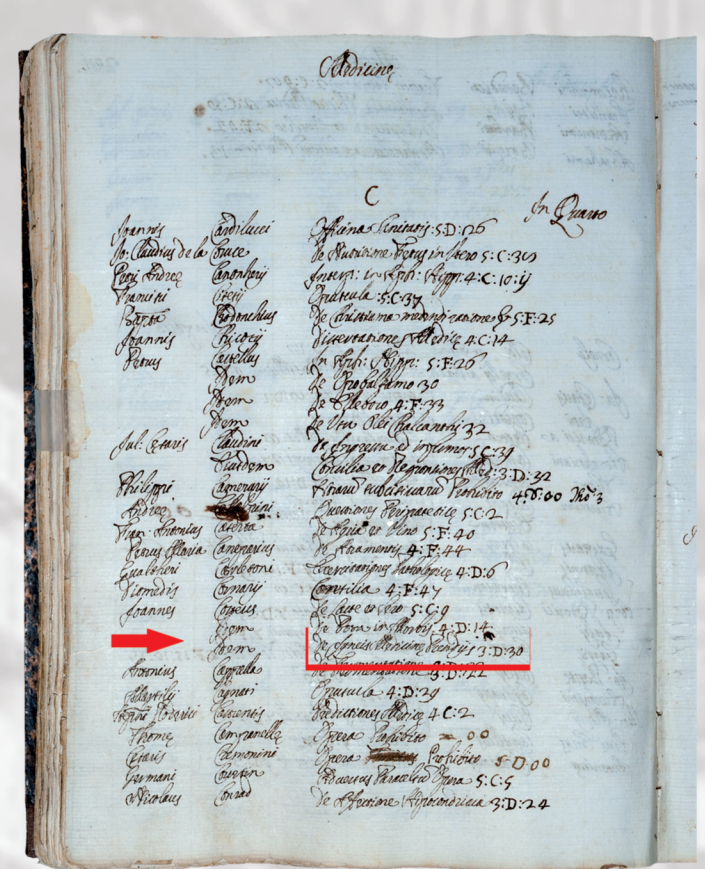
Convergency is the keyword of this project: convergency of the results of parallel studies that were pursued in the past in particular about editions, and now used for the analysis of the item, its circulation and use. The cataloging of 15,000 sixteenth-century editions started in 2000. The cataloging is provided with digitization according to the standard and uniform metadata (Edit 16; BDI, SBN). Based on the identified sources, the project has been defined since 2016, by: the use of the traditional paper resources, historical catalogs and bibliographies of the library with comparison of images, digital mapping with the reproduction of the seven original manuscripts catalogs of the library (Prof Serrai's case of study). Digital mapping, developed in cooperation with the academic research, has brought to an interoperable model for management and to an indexed elaboration of sources harvested data. This project proceeds with the comparison between the bibliographic records and the material data (former ownership, binding, decoration, manuscript annotation, information about price, etc.), whose aim is to reconstruct the identity of the original library as paradigm of the seventeenth-century public libraries. After the first step and the achievement of the first digital topographic catalog, the next stages would be: analysis of the bibliographic and material data, particularly for the fifteenth-century editions (checked by IGI, ISTC and data-entry MEI); mapping of historical noble families collections; mapping of the conventual collection (before 1866). This presentation will introduce the model used (bibliographic and digital data) in a synergic study enabled by new technologies, essential not only for the research itself but to increase cultural relevance and promotion of library too.



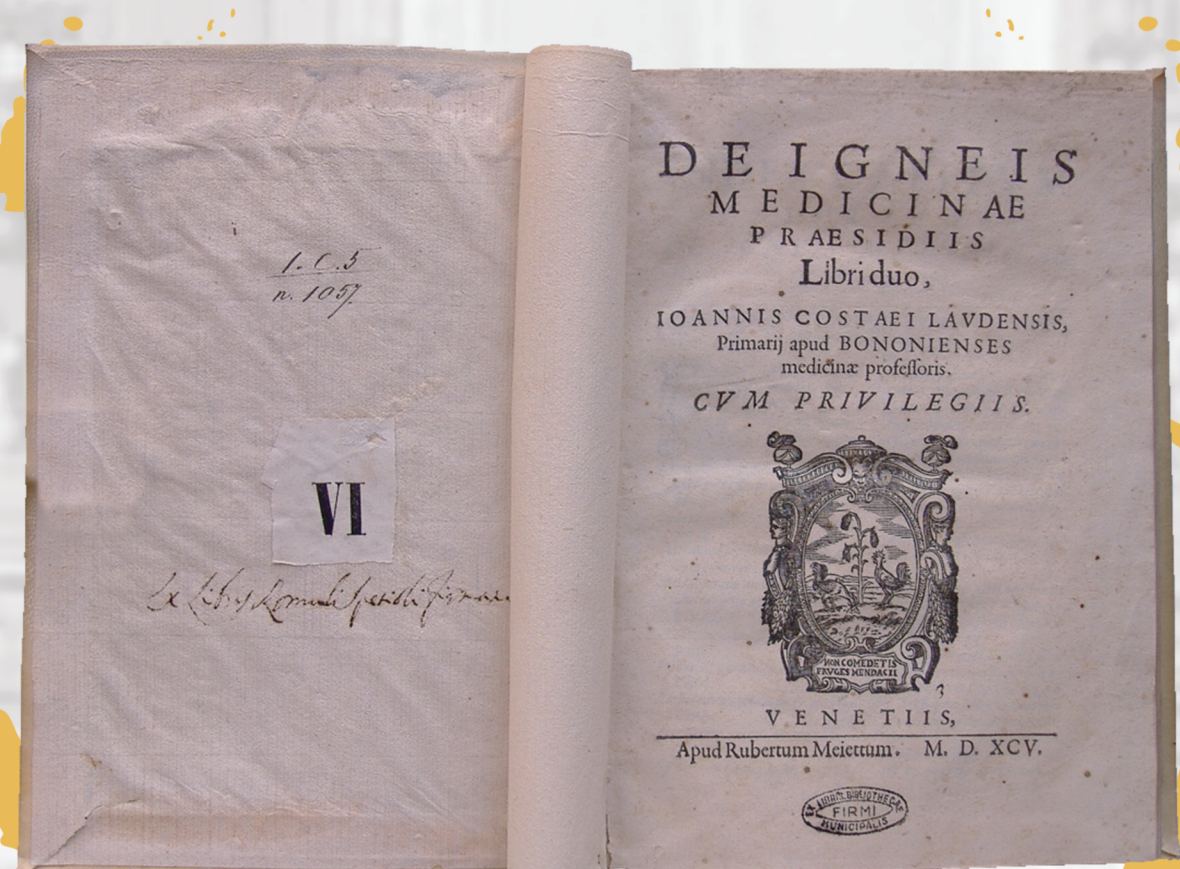
The Globe Room (1688)



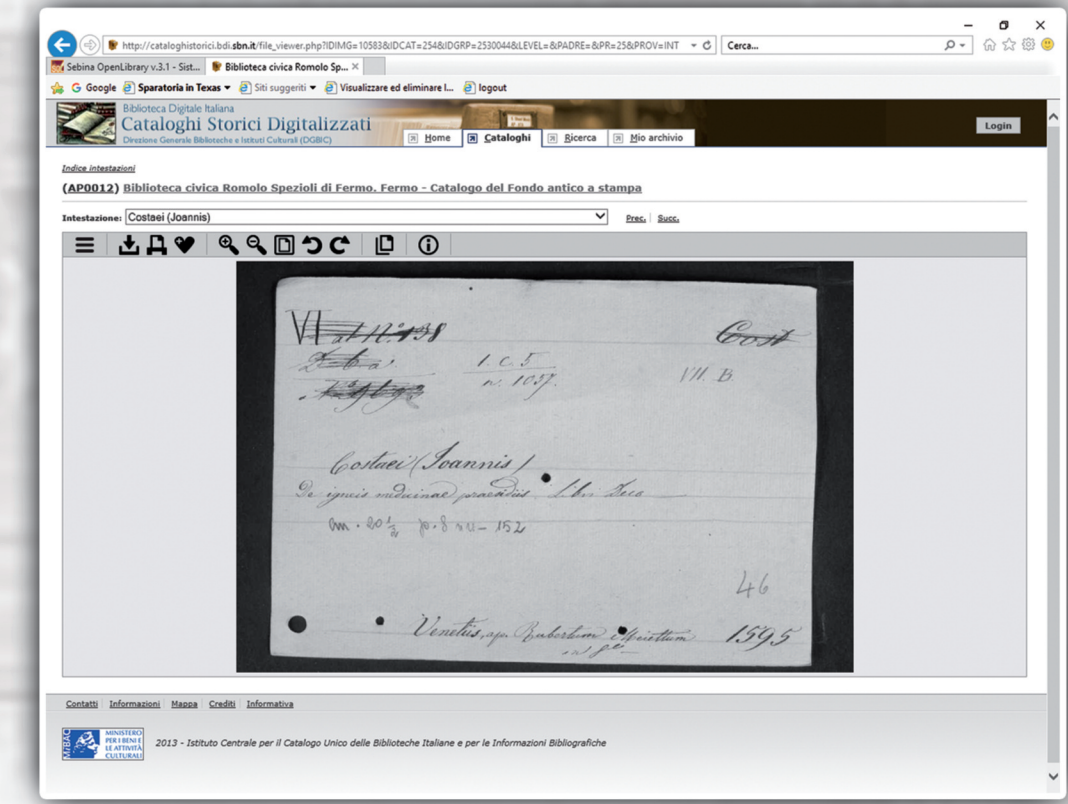
Photographic Laboratory (with digital camera)



Historical Catalogue in book-form (1706)



Digital copy (title page)



Historical Library card on BDI

Author	Location	Current Location	Standard Heading	BID on SBN	Identification number	Bibliographic description	Location (Spezioli's Library)	Ex libris	Provenience	Iconographic	Librarian's Annotations
Title transcription	(transcription)				on local OPAC	on Edit 16	on Edit 16	(transcription)	Authority file	Value	
Ioannis Costaei	3 D 3	1 C 5 1057	Costeo, Giovanni 1528-1603	NO	Id 303801	CNCE13640	NO	Ex libris Romoli Speitoli	Spezioli Romolo		

Comparative table

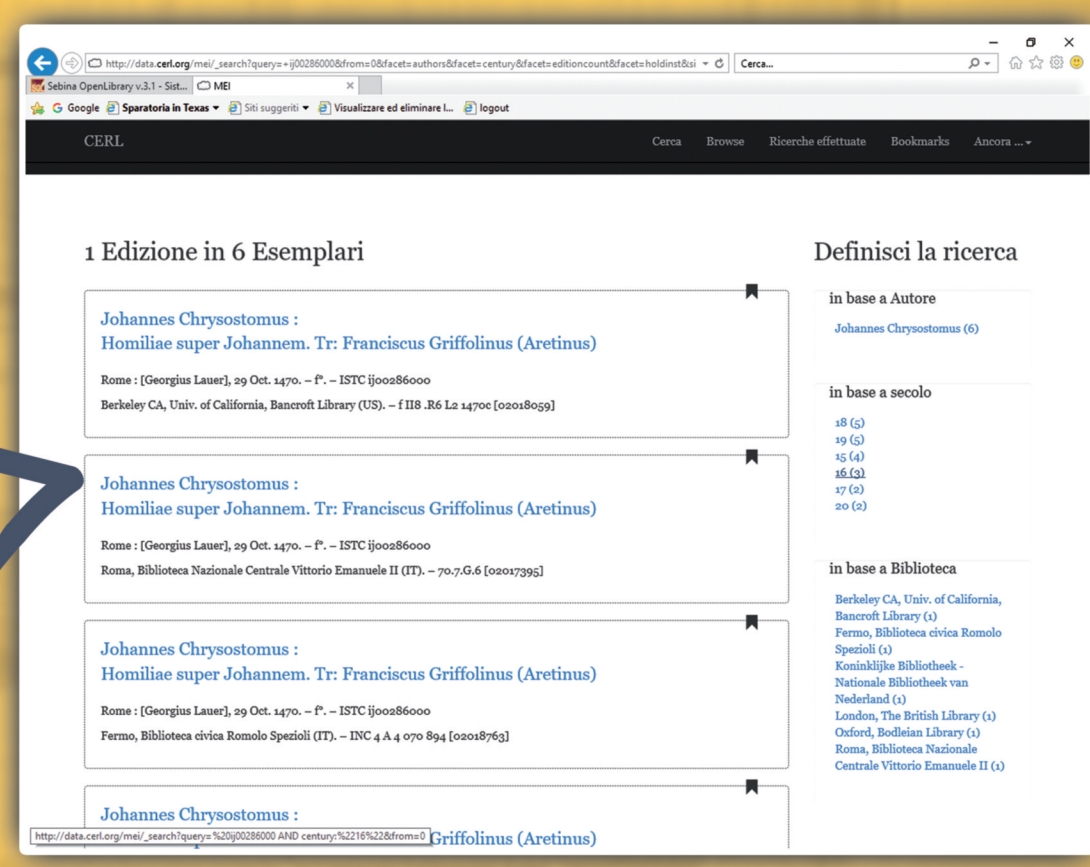
Location	Call number	IGI	ISTC (ISTC/FM)	MEI	GW	SBN	Card number
4 A 01	010 - 33815	9130	ia00679000 FM		GW M43138	UM1E022830	033
4 A 01	003 - 33808	0476	ia00588000 FM		GW 1667	RMLE061685	038
4 A 02	021 - 33826	3094	ia00088000 FM		GW 7218	CAGE000157	005
4 A 02	032 - 33840 ; 33842	0253	ia00349000 FM		GW 798	UM1E012710	022
4 A 03	053 - 33875 - 33876	3089	ia00086000 FM		GW 7205	VEAE127938	010
4 A 04	061 - 33883	3090	ia00083000 FM		GW 7206	RMLE065720	007
4 A 05	087 - 33934	0025	ia00021500 FM		GW 153		003
4 A 05	080 - 33906 - 33907	0251	ia00347000 FM		GW 796	RMLE009546	021
4 A 05	086 - 33914	0365	ia00034000 FM		GW 7971		031
4 A 05	089 - 33945	0417	ia00547500 FM		GW 1592		032
4 A 06	091 - 33949	0287	ia00383000 FM		GW 871	VIAE036842	026

Concordance table

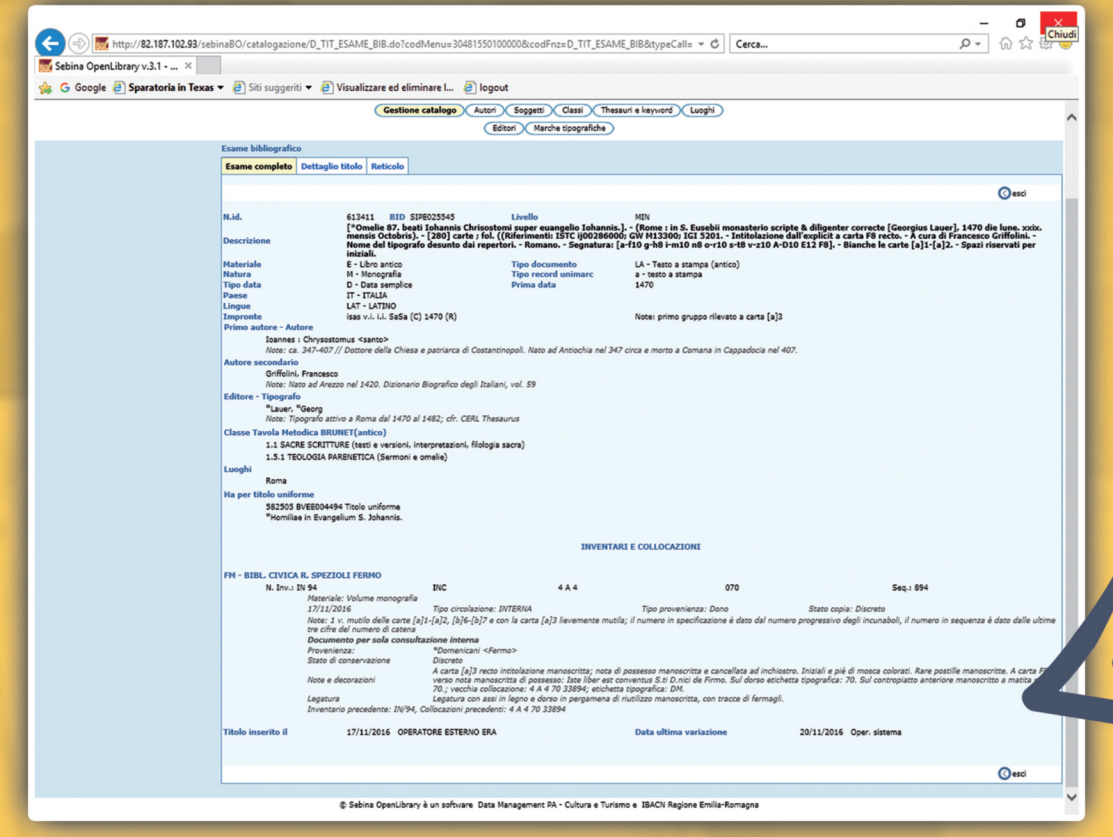
Incunabula Project Example



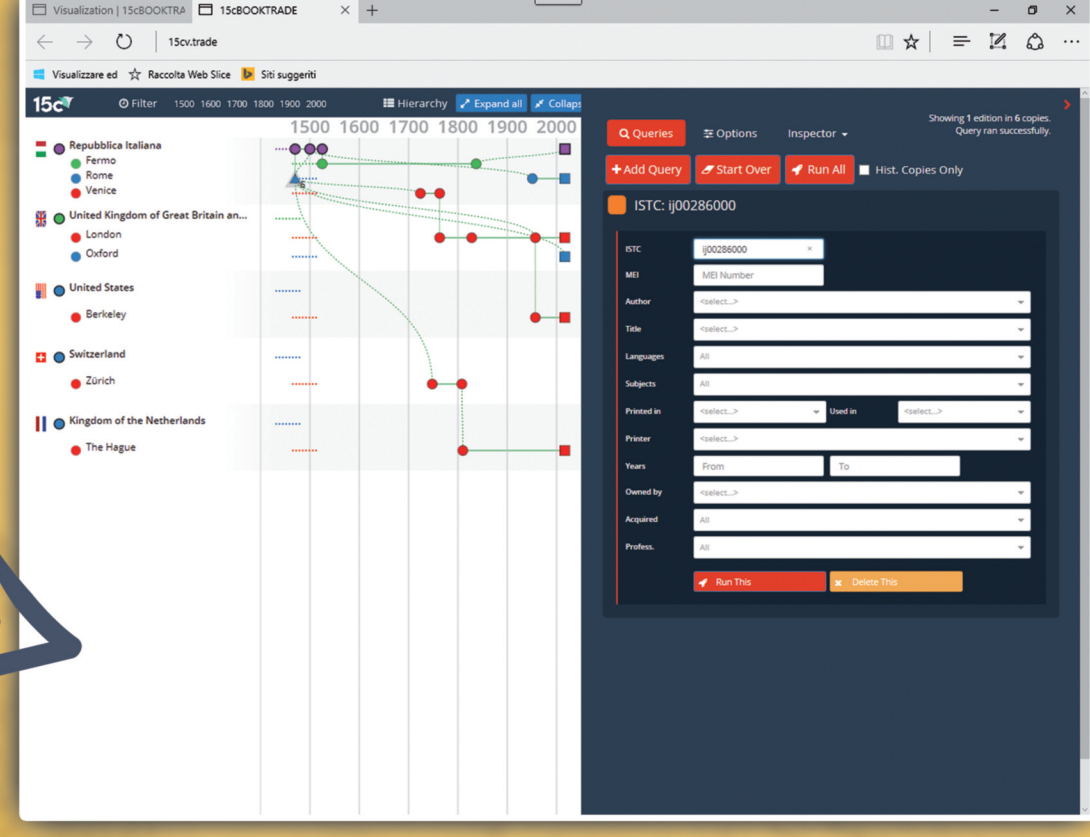
Digital Copy (title page)



Items description on MEI



Bibliographic description on Local OPAC



15cV: the visualisation tool applied to MEI and TEXT-inc

The Spezioli project's objective: Creating of Data Set with data aggregation from historical and current sources with total Information Retrieval model for each Set
Romolo Spezioli Public Library - Cristiana Iommi - Natalia Tizi