



CONSORTIUM *of* EUROPEAN
RESEARCH LIBRARIES

NEWSLETTER

<http://www.cerl.org>
ISSN 1680-4546 (appears twice a year)

Issue No. 18

December 2008

A new name for the HPB: Heritage of the Printed Book Database

The HPB Database has a new name. Following a discussion at the Working Group on the Future Development of CERL, a recommendation was made that we should find a new name, as in some languages 'Hand Press Book' Database might be thought to mean modern private press books printed by hand in small numbers for bibliophiles, rather than books printed in the age of the hand press before the Industrial Revolution. The Annual General Meeting in November 2008 accepted a proposal that the HPB should be renamed 'Heritage of the Printed Book' Database, which would retain the initials HPB as the normal way of referring to the database. This new name reflects the slogan on CERL's web site which proclaims 'Promoting Europe's cultural heritage in manuscript and print'. The Secretariat has started to change the name on CERL's web site and documentation. It will take a little longer to change the name on the OCLC server interfaces.

David Shaw

The HPB Database is nearing the 3 million records mark

The first file to be processed by OCLC was a contribution from the Regione Toscana, followed shortly thereafter by records from the Library of the Universidad Complutense in Madrid. CERL has submitted records for the pre-Brinkman collection of the National Library of the Netherlands, Polish microform materials, as well as updates to ICCU's SBN(A) file and records of the University Library of Warsaw, which will be loaded shortly. Together with records from the Bibliothèque nationale de France, the Cathedral Library in Canterbury, the Kungl. Biblioteket in Stockholm and two files from the Bibliothèque royale de Belgique in Brussels, 2009 will again see a marked expansion of the HPB database.

Assisted Searching in FirstSearch

An evaluation of the Assisted Searching functionality was undertaken by the Advisory Task Group. Several amendments to the Assisted Searching output from the CERL Thesaurus were set up in the Test CT and its impact on the effectiveness of Assisted Searching was tested and discussed. Staff at OCLC were energetic partners in all deliberations and it is expected that with the introduction of a new FirstSearch index in early January 2009, the results for users who employ Assisted Searching, particularly for personal names, will be much improved.

Access to OCLC WorldCat through FirstSearch

CERL has arranged access to WorldCat, for all CERL Full Members, via their own FirstSearch authorisation and password. In 2008-2009 all Full Members will not be charged for the first 200 searches they execute on WorldCat. The terms and conditions prohibit use of FirstSearch for cataloguing purposes. FirstSearch terms and conditions may be found here: <http://www.firstsearch.org/help/en/fslegal.html>.

Access to OCLC WorldCat through Connexion

In addition to having access to the HPB through the Connexion browser and client, CERL members who have authorisations to edit HPB records also have access to OCLC WorldCat. These authorisations can also be used to access OCLC's Z39.50 Cataloguing service. This replaces the access which HPB contributors had to the RLG Union Catalog and is intended to assist in locating cataloguing copy to support CERL members' cataloguing of materials within the scope of the HPB. It is not intended that an institution would use this access for cataloguing of other materials. If your institution is interested in using OCLC WorldCat as a source for other kinds of cataloguing, please contact OCLC (www.oclc.org) or CERL's Executive Manager.

Glenn Patton, OCLC

CERL Portal: Manuscripts and Early Printed Material

<http://cerl.epc.ub.uu.se/sportal/>

This year, the CERL Portal has been very successful in bringing in a wealth of new material.

The MANUS database from Italy, a union catalogue of German libraries (GVK), manuscript resources from Denmark and Scotland, and a German union catalogue containing more than 1.2 million autographs, have each greatly enriched this search facility. The display of any record through the CERL Portal includes, whenever technically possible, a link to the same record in the database of origin, so that the full original data are directly accessible in their native environment.

For scholars of the early printed book the CERL Portal also offers great riches. Searching the HPB and ESTC databases may now be combined with searching EROMM, VD17 and the Spanish Patrimonio databases.

User statistics show that the averages per month were: 366 distinct users visiting the Portal 900 times, with a hit rate of over 22,000 items.

The interface for the CERL Portal has been adapted to reflect the style of the CERL website:



At this time the interface and help pages are available in nine European languages, and can easily be extended to include others.

In the coming year, the programme of adding new resources will continue, with planned work on the Beinecke collection of Yale University, two databases from the Netherlands, and the German Manuscripta Medievalia.

Database accessed through the CERL Portal

Manuscript files, harvested by OAI and indexed

1. National Library of Australia Digital Object Repository
<http://www.nla.gov.au/digicoll/oai/>
2. Manuscriptorium Database
http://www.memoria.cz/site_en/index.asp
3. Istituto Centrale per il Catalogo Unico – MANUS
<http://manus.iccu.sbn.it/> and
<http://193.206.221.40/manus/>
4. Manuscripts collections of the Biblioteca Nacional de Portugal
<http://bnd.bn.pt/>
5. Ediffah (Göteborg UL, KB Stockholm, LIBRIS, The National Archives, Lund UL, and Uppsala UL)
<http://www.ediffah.org/search/>
6. St Laurentius Digital Manuscripts Library, Lund
<http://laurentius.ub.lu.se/>
7. Waller manuscript collection
<http://www.ub.uu.se/arv/waller/esamling.cfm>
8. Digital Scriptorium, Columbia University, New York
<http://sunsite3.berkeley.edu/Scriptorium/index.html>

Manuscript files, remote access (Z39.50)

9. Kalliope – Verbundskatalog Nachlässe und Autographen
<http://kalliope.staatsbibliothek-berlin.de/>
10. GVK – Gemeinsamer Verbundkatalog
<http://gso.gbv.de>
11. Royal Library, Copenhagen
www.kb.dk/da/forside/REX/
12. National Library of Scotland, Edinburgh
<http://mss.nls.uk/cgi-bin/Pwebrecon.cgi?DB=local&PAGE=First>

Printed material files, harvested by OAI and indexed

13. Manuscriptorium – prints. See item 2 above

Printed material files, remote access (Z39.50)

14. CERL Heritage of the Printed Book Database
<http://www.cerl.org>
15. English Short Title Catalogue
<http://estc.bl.uk>
16. VD17 - Verzeichnis der im deutschen Sprachraum erschienenen Drucke des 17. Jahrhunderts
<http://www.vd17.de/>
17. EROMM - European Register of Microform and Digital Masters
<http://www.eromm.org/>
18. CCPB - Catálogo Colectivo del Patrimonio Bibliográfico Español
<http://www.mcu.es/bibliotecas/MC/CCPB/index.html>

If you want to contribute a collection, please contact secretariat@cerl.org.

CERL Thesaurus

<http://cerl.sub.uni-goettingen.de/ct/>



At the time of the Annual General Meeting, the CERL Thesaurus contained 697,530 records. The growth in the number of records mainly comes from an increase in the number of personal names, but corporate body names and printers' names saw an increase as well. A list of all files that have been included in the CERL Thesaurus is available at http://www.cerl.org/web/en/resources/cerl_thesaurus/contents.

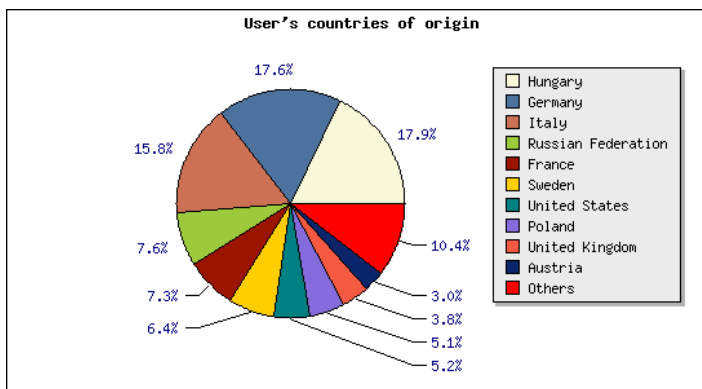
In 2008 three files containing provenance information were added to the CERL Thesaurus. The contributions came from the Library of the Universidad Complutense in Madrid, the Canterbury Cathedral Library (provenances found in the Collection of the theologian Joseph Mendham), and finally from Margret Ford, based on her contribution to the *Cambridge History of the Book in Britain*. With the loading of printers' records from the Watermarks in Incunabula printed in the Low Countries (WILC) Database, the CERL Thesaurus now offers linking to the watermarks in the paper used by these 76 printers. A small number of corporate body names from the Dutch Pre-Brinkman file were added, as were an update of the University of Warsaw's personal names file and records for Vindel printers' devices (see Digital Resources – Printers' Devices below).

Upcoming file loads

- A file of place names which also contains geo-coordinates, provided by the Bernstein paper project (Akad. d. Wiss, Wien, ca. 14,000 records),
- two provenance files, one from the University of Salamanca in Spain (c. 2,390 records) and one from the Middle Temple Library in London. (c. 500 records),
- printers and persons extracted from the pre-Brinkman file contributed to the HPB Database by the National Library of the Netherlands, and finally,
- an update of the authority records contributed to the CERL Thesaurus by the National Library of Croatia.

User statistics

After a peak of almost 12,000 searches in February 2008, the number of searches per month is currently levelling off at a very respectable 10,000 searches per month, or more than 300 searches per day. The majority of our users still come from Italy, Germany and Sweden, followed – and this is new – by Hungary. This chart is based on all searches performed since summer 2006 (which

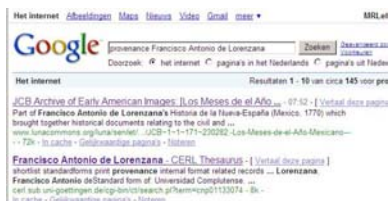


saw the introduction of the new web interface). In this period, there were times when some countries and/or institutions showed clear peaks of usage, which may lead to the conclusion that the CERL Thesaurus plays an important role in projects conducted by institutions for a limited time period.

Sitemaps

It has been a long-cherished wish of CERL's Advisory Task Group to make the CERL Thesaurus accessible to crawlers of search engines such as Google, etc. The Data Conversion Group is currently investigating the setting up of XML-Sitemaps, which contain URLs for each record in the database, thus directing a web crawler directly to a record's full display. The XML-Sitemap format is a standard for presenting URLs to search engines that has been developed by Google and is also recognised by Yahoo and MSN. DCG has implemented XML-Sitemaps for the imprint place name records and those records that contain provenance information. If the outcome of this test shows a better visibility of the CERL Thesaurus in Google and other search engines, the remaining records should also be included in the Sitemaps files.

Alex Jahnke, DCG



Digital Resources – Printers' Devices



The Kongelige Bibliotek in Copenhagen has completed the digitisation of Francisco Vindel, *Escudos y marcas de impresores y libreros en Espana durante los siglos XV a XIX (1485–1850)*. A file of metadata prepared by the Kongelige Bibliotek was converted into the CERL Thesaurus format and loaded. As a result, 601 printers' names, linking to 1,200 digitised devices, are now available through the CERL Thesaurus.

The Staatsbibliothek in Berlin (SBB-PK) has digitised Alsatian printer devices published in: *Elsässische Büchermarken bis Anfang des 18. Jahrhunderts / hrsg. von Paul Heitz; Mit Vorbemerkungen und Nachrichten über die Drucker von Karl August Barack. - Strassburg: Heitz & Mündel, 1892. - XXXIV, 160 S. : Ill. (LXXXVI Taf.). - (Die Büchermarken oder Buchdrucker- und Verlegerzeichen ; [1])*. CERL is grateful to Heitz

and Mündel for their permission to make the printers' devices in this publication available through the CERL Thesaurus, and hopes that other publications from this series may follow. SBB-PK aims to edit the authority information and linking to the images in the printers' records of the GBV union catalogue (GVK) rather than directly in the CERL Thesaurus. With the next update of the GVK printers' records the information will then become part of the CERL Thesaurus.

Provenance problems

http://www.cerl.org/web/en/resources/provenance/can_you_help

As part of its mission to promote Europe's cultural heritage in manuscript and print, CERL has developed a set of web pages for provenance and book ownership (<http://www.cerl.org/web/en/resources/provenance/main>). These pages give information about publications on provenance and links to online provenance resources.

A new page has been added for queries concerning provenance identifications. This page is called 'Can you help?'. At the moment it only has a small number of queries, mainly for unidentified armorial binding stamps from work I am doing at Canterbury Cathedral Library. If you have provenance questions you would like to add to this page, or information about publications and projects, please send a message to d.j.shaw@cerl.org.

David Shaw

Image	Description	Further information	Contact	Status
	Arms of the church of St. Andrew's, Canterbury	Arms of a church	Contact	Can You Help?
	Arms of a book binding	Arms of a book binding	Contact	Can You Help?
	Arms of a book binding	Arms of a book binding	Contact	Can You Help?
	Arms of a book binding	Arms of a book binding	Contact	Can You Help?

Europeana: Digital Paintings, Books, Films and Archives

<http://www.europeana.eu/>

CERL is a founding member of the EDL Foundation, which is responsible for the development of the Europeana proto-type launched in November 2009. Through an aggregator developed for CERL by the Data Conversion Group, CERL was instrumental in contributing a set of 1,125 records of travel literature from the Niedersächsische Staats- und Universitätsbibliothek, Göttingen (Itineraria), and c. 8,000 records for digital material from the Bayerische Staatsbibliothek, München.



europeana
pensez culture

On the day of the launch, the three servers employed to support Europeana in The Netherlands could not cope with the traffic of around 10 million hits per hour (3,000 concurrent users), which led to the slowing down or the temporary unavailability of Europeana on Thursday, 20 November. An upgrade of computer capacity will be carried out in the coming period.

The EDL Foundation will also be responsible for Europeana v1.0, the successor network to the current EDLnet thematic network. Europeana v1.0 is set up to turn the Europeana prototype into an operational service and is due to start in the spring of 2009. CERL is a partner in Europeana v1.0, and will take part in WP1 Developing the Partner and User Network. CERL members wishing to contribute their digital materials to Europeana via the CERL aggregator should contact the CERL Secretariat (secretariat@cerl.org).

CERL Annual Meeting

Saturday 8 November 2008, Bibliothèque nationale de France, Paris

Our 2008 Annual General Meeting was attended by 40 representatives of CERL member libraries from over 20 countries in the Petit Auditorium of the Bibliothèque nationale de France at the Tolbiac site in Paris.

Members reviewed the activities of the Consortium during the previous year and approved plans for the coming year. Some of these are reported on other pages in this Newsletter (Renaming the HPB; Changes to Group Membership; New ClusterPlus scheme; CERL Research Portal).

Members also discussed progress with the Consortium's services (HPB, CERL Thesaurus, and CERL Portal) and heard reports from OCLC, the Advisory Task Group, and the Working Group on the Future Development of CERL.



Bibliothèque nationale de France, Paris

European developments

Mr Wouter Schallier, the new Director of LIBER, attended the meeting as a guest of the Consortium. He spoke about plans to forge closer links between LIBER and CERL, as both organisations have an office in the Royal Library in The Hague. A small working group consisting of Dr Ann Matheson and Mr Schallier for LIBER and Professor Elmar Mittler and Drs Marian Lefferts for CERL will investigate possibilities for closer collaboration. The working group will report regularly to the CERL Directors and Executive Committee, as well as the LIBER boards. CERL's Chairman, Professor Mittler, reported on the Consortium's participation in the Europeana project (for more on Europeana, see above).

Elections

There were two vacancies for the Executive Committee. Dr Jutta Weber (Staatsbibliothek, Berlin) and Dr Ann Kelders (Bibliothèque royale de Belgique, Brussels) were elected. For the three vacancies on the Board of Directors, Dr István Monok (National Széchényi Library, Budapest) and Dr Vladimir Zaitsev (National Library of Russia, St Petersburg) were elected for further terms and Mr Gérald Grunberg (Bibliothèque nationale de France, Paris) was elected to fill the other vacancy.

2009 Annual General Meeting

Koninklijke Bibliotheek/Bibliothèque royale de Belgique, Brussels/Bruxelles, 6 and 7 November 2009

At the end of the meeting, Dr Ann Kelders, on behalf of Mr Patrick Lefèvre, General Director of the Bibliothèque royale de Belgique, issued an invitation to the Consortium to hold the Annual Seminar and Annual General Meeting in Brussels in 2009. At the same time, the Bibliothèque royale will prepare an exhibition of acquisitions, in celebration of 40 years in the current library building. Together, the Bibliothèque royale and CERL will organise a seminar on 'Urban networks and the printing trade in early modern Europe – 15th-17th centuries'.

David Shaw

2008 Annual CERL Seminar

Linking the worlds of script and print: Catalogues of European manuscripts and early printed books

CERL's 2008 Annual Seminar was held on Friday 7 November 2008 in the Petit Auditorium at the François-Mitterrand (Tolbiac) site of the Bibliothèque nationale de France, Paris, on the theme 'Linking the worlds of script and print: Catalogues of European manuscripts and early printed books'. The Seminar was well attended by over 80 participants from CERL member libraries and from institutions in the Parisian area and beyond.

Following a welcome by Mr Gérard Grunberg, director of the Délégation aux Relations Internationales at the Bibliothèque nationale de France, Mr Ivan Boserup from the Royal Library in Copenhagen introduced the first speaker, Dr Claudia Fabian, head of rare books and manuscripts at the Bayerische Staatsbibliothek, Munich, who spoke on electronic catalogues of manuscripts in German libraries ('Le catalogue des manuscrits dans le réseau moderne de l'information des bibliothèques: coup d'oeil sur les expériences allemandes'), describing a range of projects which are attempting to bring older catalogues into the internet arena as well as new projects to digitise manuscript collections. She spoke in particular about the *Manuscripta medievalia* catalogue which will be added to the CERL Portal in 2009.

Following the coffee break, Mr Thierry Delcourt, director of the département des Manuscrits of the BnF, introduced the next two speakers. Mr Yann Nicolas, head of the Calames project at ABES, the French higher education bibliographical agency, spoke about 'Catalogues informatisés de manuscrits en France: l'exemple de Calames, réseau des bibliothèques universitaires et de recherche' describing the work of his team in creating a manuscript database to parallel the SUDOC catalogue of printed books in the university sector in France. So far, the database has 36,000 records from 45 contributing institutions. Mr Nicolas described the design principles behind its user interface, the projects success in getting it indexed by Google, and offered the possibility that the CERL Portal would be able to harvest its data.

Mr Florent Palluault from the Catalogue Collectif de France then gave an update on his presentation to the Annual Seminar in Rome in 2005 under the title 'A union catalogue in the making: the manuscript interface of the Catalogue collectif de France'. He introduced the new Pléiade software and described the wide range of materials included in the project.

After an excellent buffet lunch, Mme Isabelle Le Masne de Chermont, adjointe aux questions scientifiques et techniques de la Direction des collections at the BnF, introduced the speakers for the afternoon session on 'Early printed books: new possibilities for research'. Dr Zoran Velagić from the University of Osijek in Croatia spoke on 'The Hand Press Book Database as a source for early modern book history'. He explored the publications of 18th-century Croatian religious writers, attempting to identify the works which they cite and indirectly the reading matter which was available to them. He stressed the usefulness of the HPB for deciphering the often much abbreviated references which writers made for their sources.

Mr Eric Dussert from the Direction des collections at the BnF presented a paper on 'La numérisation des documents patrimoniaux, de Gallica à Gallica 2', describing the development of this major French digitisation project, its goals, and methods. Currently an additional 11,000 documents a year are being scanned and made available by OCR.

The final speaker was Dr Otfried Czaika (Kungl. Bibliotek / National Library of Sweden, Stockholm) who reported on his research on the spread of the Reformation in Sweden in a paper entitled 'Reading Melanchthon in 16th and 17th century Sweden: researching provenances in Swedish libraries'. He showed that the bibliographical evidence of book ownership in 16th-century Sweden demonstrated that Melanchthon's role in the Swedish Reformation was far more important than modern historians have recognised.

As is by now customary, we hope to publish the papers from the Paris Seminar as *CERL Papers IX* in late 2009. Readers might like to note that *CERL Papers VIII* (Uppsala 2007) will be appearing a little later than usual, probably in February 2009.

David Shaw

CERL's Development Plan 2008–2012: towards a CERL Research Portal

Scholars and researchers from many different subject areas – among them book history, political and social history, art history, ecclesiastical history, philosophy, etc. – are interested in books not only for their intellectual content; in many cases they study the information objects themselves as sources of evidence as well. Book and library history are not only academic subjects in themselves, but serve also as “Hilfswissenschaft” for a large number of various historical approaches. Thus book historical projects comprise a double function: they offer valuable information for scholars and researchers in the field of book history and simultaneously give background information which is requested for various special aspects of historical research. Bibliographical data not only provides descriptive information about individual works, but also offers insights into collective thought processes, historical developments and actions, socio-cultural phenomena, economic factors affecting evolving technologies and the originality and flexibility of European thinking.

As the European written and printed heritage has been dispersed all over Europe and worldwide through migration, the book trade, belligerence and war booty; it cannot be displayed adequately in its entirety. A central access point for printed and online resources supplemented with references to collection history, provenance, binding, usage, and possibly combined with access to current research, could serve as a meeting ground for researchers working with Europe's written heritage and support their research activities as well as give easier access to information for the broader public.

Creating such a central access point will require intense collaboration between various partners. In the years to come the Consortium of European Research Libraries intends to play a leading role in facilitating this collaboration between libraries, academics and technical developers, with the aim of developing a research portal for book history.

CERL's AGM approves new membership categories

http://www.cerl.org/web/en/membership/categories_of_membership

At the Annual General Meeting held at the Bibliothèque nationale de France in Paris in November 2008, the members of CERL approved several new proposals concerning the categories of membership of the Consortium.

Cluster libraries

Each Full Member of CERL is entitled to nominate up to 15 smaller libraries from its region which will be entitled to free access to the HPB (Heritage of the Printed Book) Database. As a result of the move to OCLC's FirstSearch environment in 2007, there have been changes in the way the cluster libraries' access is arranged and paid for by CERL. The AGM confirmed the existing policy that each cluster library could share an account to access the HPB from a single terminal using a password supplied through its Full Member. Where a cluster library wishes to offer wider access to the HPB for its staff and readers using its local area computer network, CERL can ask OCLC to provide a separate account which allows access by IP addressing. CERL has to pay a charge to OCLC for each separate account and must recover the cost of this from the cluster library. The AGM approved the creation of a new category of cluster library to be called *ClusterPlus*. For an annual fee of €500, a ClusterPlus library will have institution-wide free access to the HPB Database. Libraries wishing to move to this new category should contact the Secretary, preferably through their Full Member. All applications concerning cluster library status must be approved by CERL's Board of Directors.

Group Membership

The Annual General Meeting also approved a new fee structure for Group Members. There will now be a basic fee of €8,000 for the Group Membership plus €3,500 for the second and subsequent members of the Group. This means that a Group of three members would cost €15,000 (instead of €24,000 for three Full Members). The Board of Directors has the power to vary these terms in particular cases (for example, if some of the libraries are small). One library will take responsibility for the payments for the whole Group, which can divide the payment among its members in any way it wishes. Applications for group membership should be made to the Secretary (secretariat@cerl.org).

David Shaw

CERL welcomes Tartu University Library

<http://www.utlib.ee/en/>

CERL is very pleased to announce that it has another new member. Tallinn University Library has joined forces with the Academic Library of Tallinn University (already a member of CERL) to form a new Estonian Group Membership. The CERL AGM in November 2008 approved new rules for Group Membership which makes the formation of a small national or regional group much easier (see below).



From Tartu's web site: 'Tartu University Library is the oldest and biggest continuously working library in Estonia. Being the most universal Estonian research library, its collections contain materials on all fields of science taught at the university. Fulfilling some functions of national library together with the Estonian National Library, the Estonian Academic Library and the Archival Library of the Estonian Literary Museum, Tartu University Library collects and holds printed and other documents published in Estonia, creating as complete collections of these materials as possible. Current Estonian National Bibliography was compiled at Tartu University Library in the 1920s and 1930s. In 1958 the library was given the status of the 'scientific library' (according to the Soviet classification of libraries), resulting in better conditions for bibliographic work and research, and in the creation of restoration department at the library.'

CERL intends to hold a workshop for Estonian libraries in June 2009 when its Executive Committee meets in Tallinn. We look forward to meeting colleagues from Tartu on that occasion. David Shaw

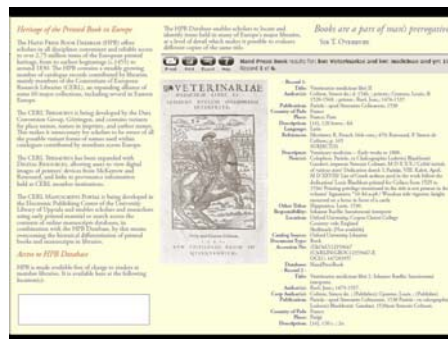
Promotion of CERL

Leaflets

Leaflets are now available in English, French, German, Italian, Russian and Spanish, and may be downloaded from <http://www.cerl.org/web/en/publications/leaflets>.

Workshops

November 2009 – Lyon (E. Mittler)
 January 2009 – Warsaw (D. Shaw / M. Lefferts)
 March 2009 – VD17 conference, München (ATG/EC)
 June 2009 – Tallinn (D. Shaw / K. Kaugver / M. Lefferts)
 September/October 2009 – Zadar (D. Shaw / M. Lefferts)



CERL wishes all colleagues a wonderful Christmas and a prosperous 2009.



Consortium of European Research Libraries
 40 Bowling Green Lane, London EC1R 0NE, United Kingdom
 Tel: 020 7415 7134 – Fax: +44 20 7970 5643
 E-mail: Marian.Lefferts@cerl.org