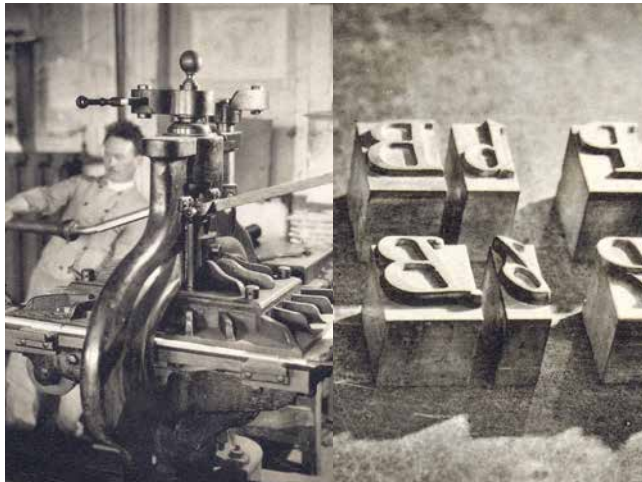


The HPB Database is a valuable resource for studying the transmission and dissemination of texts in print. When was a text first published, in which country? When was it translated, did it see many reprints, to which countries did it spread? How many copies of its editions survive today? In which collections, and who were the previous owners? The HPB Database's specialist indexes allow the interrogation of the database in many ways (e.g. imprint data, provenance data, size of the books, fingerprints, references and of course author and title). The HPB help text helps you to make the most of these, see [www.cerl.org/help/hpb/main](http://www.cerl.org/help/hpb/main).



### CERL Electronic Resources

#### The CERL Thesaurus (CT)

The CERL Thesaurus contains forms of names for imprint places, persons and corporate bodies, printers and their devices, as well as provenance information.

#### The CERL Portal (CP)

The CERL Portal enables scholars to search across the contents of online manuscript databases, in combination with selected large databases of printed materials, thereby overcoming the historical differentiation of printed books and manuscripts in libraries.

#### Material Evidence in Incunabula (MEI)

MEI is a database for recording and searching the material evidence of 15th-century printed books: ownership, decoration, binding, manuscript annotations, stamps, prices, etc.

#### Can You Help? – Identifying Provenance Evidence

This is a resource for public discussion and identification of provenance queries. It allows the sharing of queries with an extensive network of specialists and the contribution of expertise.

#### Smaller data sets

CERL offers access to Paul Needham's Index Possessorum Incunabulorum (IPI), Margret Lane Forde's Early Book Owners in Britain, and Eric White's Researching Print Runs.

# Heritage of the Printed Book Database

Accessing the record of Europe's book heritage

# CONSORTIUM OF EUROPEAN RESEARCH LIBRARIES

### File contributions

If you wish to contribute bibliographic records to the HPB, please contact the CERL Executive Manager at [marian.lefferts@cerl.org](mailto:marian.lefferts@cerl.org). CERL will accept data in MARC / UTF-8. The Data Conversion Group (DCG) in Göttingen have developed and implemented a UNIMARC–MARC21 conversion, which aims at retaining as much of the data as possible, in particular elements concerning antiquarian material. Elements that lack a direct counterpart in MARC21 format will at least be visible in the HPB (and ideally also retrievable). In preparation for loading, DCG analyses all data sets and harmonises data across the various fields and subfields so as to support uniform search and retrieval across the HPB database.



CONSORTIUM OF  
EUROPEAN  
RESEARCH  
LIBRARIES

Finsbury Business Centre, 40 Bowling Green Lane,  
London EC1R 0NE

Telephone: +44 20 7415 7134,

Fax: +44 20 7970 5643

E-mail: [secretariat@cerl.org](mailto:secretariat@cerl.org), [www.cerl.org](http://www.cerl.org)

June 2014



# Heritage of the Printed Book

The Heritage of the Printed Book Database (HPB) offers scholars in all disciplines access to 5 million items of the European printed heritage, from its earliest beginnings (c.1455) to around 1830.

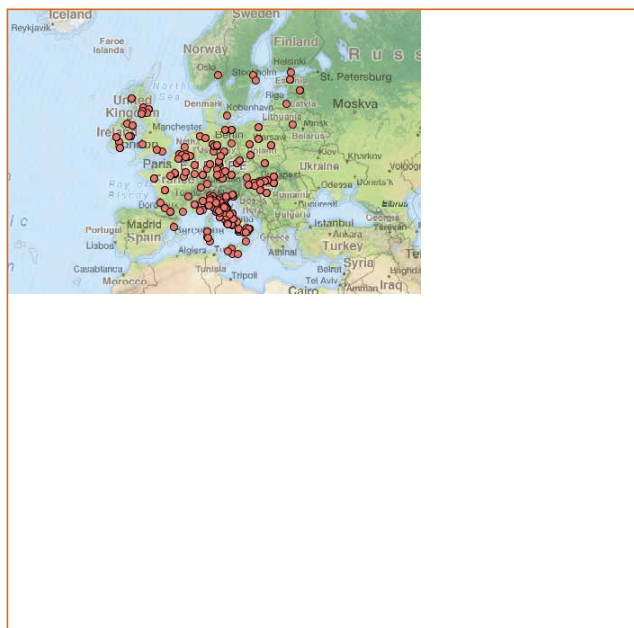
The HPB contains a steadily growing number of catalogue records contributed by libraries, mainly members of the Consortium of European Research Libraries (CERL). The majority of files consist of high-level bibliographical records created by book-in-hand cataloguing. Some others contain records created as a result of retroconversion projects, and these are gradually being replaced by sections of enhanced records. CERL is continually updating and adding new files to the database, widening its scope, coverage and value to scholars.

The HPB Database enables scholars to locate and identify items held in many of Europe's major libraries. A wealth of copy-specific information like provenance or binding information is made available. As digitisation of cultural heritage items proceeds all across Europe, the HPB Database is offering direct access to content by linking to digital reproductions from contributing libraries, when available.

With the full integration of the CERL Thesaurus (CT) to support search and retrieval, users need not enter all variant forms of names as separate search terms. They may retrieve a complete list from the CERL Thesaurus, and adopt all variants as search terms. Searches for publication places, personal names (authors, editors, translators etc.) and names from imprints (printers, publishers, booksellers etc.) can thus be expanded.

## CERL members

Not visible on the map are Yale University.



Yale University Libraries

HPB is made available free of charge to readers at CERL member libraries and subscribing institutions.

A limited view of HPB records with simple retrieval options is also freely available via the CERL Portal (<http://cerl.epc.uu.se/>).

## Contributing Libraries and Institutions

- Belgium:** Royal Library
- Croatia:** National and University Library
- Czech Republic:** National Library
- Denmark:** Royal Library
- Estonia:** Academic Library of Tallinn University, Tartu University Library
- Finland:** National Library
- France:** Bibliothèque nationale de France, l'Agence bibliographique de l'enseignement supérieur (ABES), Bibliothèque municipale de Lyon,
- Germany:** Bayerische Staatsbibliothek, Gemainamer Bibliothek Verbund, Niedersächsische Staats- und Universitätsbibliothek
- Hungary:** National Széchényi Library, Szeged University Library
- Italy:** Sistema Bibliografico Nazionale (SBN) from ICCU, Regione Toscana
- Lithuania:** National Library
- Netherlands:** Koninklijke Bibliotheek, the National Library of the Netherlands
- Norway:** National Library
- Poland:** National Library of Poland, results of the Bosch project, Warsaw University Library, Wrocław University Library, Jagiellonian University Library,
- Russia:** National Library, St Petersburg
- Slovenia:** National and University Library
- Spain:** Biblioteca Nacional de España, Universidad Complutense
- Sweden:** Royal Library
- UK:** British Library, Cathedral Libraries Catalogue, Mendham Collection, National Library of Scotland, National Library of Wales, Oxford University Libraries, University of London Libraries, Wellcome Library
- USA:** Yale University Libraries
- Vatican:** Biblioteca Apostolica Vaticana



*More information*  
[http://www.cerl.org/web/en/  
resources/hpb/main](http://www.cerl.org/web/en/resources/hpb/main)