

# CENDARI: Collaborative European Digital Archival Infrastructure

Dr Kathleen Walker-Meikle (CERL Project Officer)  
Email: [kathleen.walker-meikle@cerl.org](mailto:kathleen.walker-meikle@cerl.org)



# About CENDARI

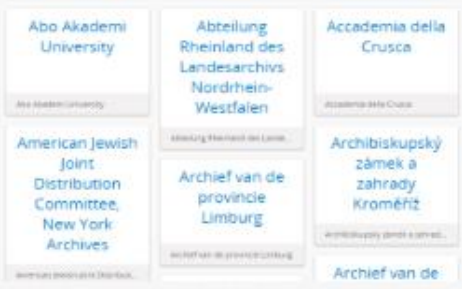
- 4-year European Project, 7th Framework Program
- European Commission-funded, led by Trinity College Dublin
- EU Financial Contribution: €6.5 million
- Partners from 14 institutions across 8 countries
- Two domains as prototypes: Medieval Culture and World War One
- Project outputs: Virtual Research Environment, Archival Directory and Archival Research Guides



# CENDARI Partners

- [Trinity College Dublin](#) (Ireland)
- [Freie Universität Berlin](#) (Germany)
- [King's College London](#) (United Kingdom)
- [Institut National de Recherche en Informatique et en Automatique](#) (France)
- [Národní knihovna České republiky](#) (Czech Republic)
- [University of Birmingham](#) (United Kingdom)
- [Göttingen Staats- und Universitätsbibliothek, Universität Göttingen](#) (Germany)
- [The European Library](#) (Netherlands)
- [Mathematical Institute of the Serbian Academy of Sciences and Arts](#) (Serbia)
- [Universität Stuttgart](#) (Germany)
- [Università di Cassino](#) (Italy)
- [Società Internazionale per lo studio del Medioevo Latino](#) (Italy)
- [Fondazione Ezio Franceschini](#) (Italy)
- [Consortium of European Research Libraries](#) (United Kingdom)

### Archival Directory



- Explore archival resources
- Register new archive
- Enrich the archival directory

### Notes



- Create your research project
- Take Notes
- Tag persons, places, events
- Search through CENDARI resources

### Search



- Search CENDARI data
- Navigate to sources

### Medieval sources



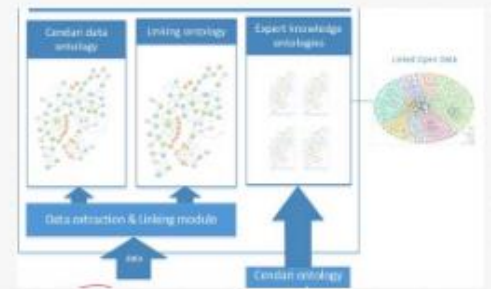
- Find medieval resources

### Archival Research Guides



- Define your topic

### Ask Questions



- Find medieval resources

# PERSONAL REOURCES

# DOCUMENTS + TRANSCRIPTS + IMAGES

# ENTITY VISUALIZATIONS

Resources

New Save Import Help

Visualizations

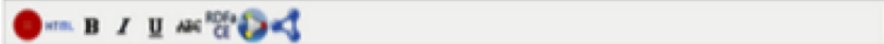
- My Projects:
  - Green Cadres
  - WW1
    - Notes (1)
      - Green Cadres Notes
    - Documents (144)
    - Entities (7)
      - Event (1)
      - Organization (0)
      - Person (3)
      - Publication (0)
      - Artifact (0)
      - Place (5)
      - Tag (3)

Document 67: PIRLY-4E2-2079-4

Transcript [ Read Only ] --- click here for Edit mode

Guillaume FRAPET, fils de feu Guillaume FRAPET et de Jeanne COULLAUD, et Jeanne PION, fille de Pierre PION et de Françoise MENEUVRIER sa femme, vivants ses père et mère, assistée des Sieurs Mathurin et Mathurin MONMOUSEAU et de Jacques MESTAYER, son beau-frère les dits futurs décrétés de mariage, demeurant tous séparément à la Sauzais, par. Ste-Croix. La dite COULLAUD donne à son fils la moitié d'une gabarre du port de 60 tonneaux, estimée à la somme de 600 livres, l'autre Moitié appartenant à la dite COULLAUD. La future apporte 460 livres en meubles.

Document Description [ Read Only ] --- click here for Edit mode



PIRLY-4E2-2079-4

Image Viewer



Most Common Person **FRAPET, Guillaume**



Most Common Place **Nantes** 128 docs



Most Recent **Date: 1711/1/29** 1711-1-29

Oldest **Date: 1669/6/5** 1669-6-5



Most Common Place **Nantes** 128 docs





## Faceted search

- Application, Artifact, Contributor, Creator, Date, Event, Format, Language, Location, Organisation, Person, Place, Project, Publisher, Reference, Tag

## Entities and Visualisations: Event, Organisation, Person, Place, Publication, Tag

The screenshot displays the CENDARI web interface. The browser address bar shows the URL: <https://notes.cendari.dariah.eu/cendari/joerglehmann/notes/52/read>. The interface is divided into several panels:

- Resources:** A sidebar on the left with a 'Sort by:' dropdown set to 'alphabetical'. Below it, 'My resources:' includes 'My projects' (andreizamoiski, caterinamenichetti, francescamorselli, irenetani, jakubbenes, joerglehmann) and 'Notes (64)' with a list of documents like 'Wissenschaftliche Gesel', 'War Committee of the F', etc.
- Main Content:** A 'New Note' editor with tabs for 'Entities (13)', 'Status (Open)', and 'Authorship'. The title is 'ARG Parallel Records and Supplementary Material – Poland'. A 'Table of contents (hide)' lists:
  1. [Author](#)
  2. [Abstract](#)
  3. [Introduction](#)
  4. [Polish Territories in the First World War – Events, People, Organisations, Concepts](#)
    - i. [Pre-war](#)
    - ii. [1914–1918](#)
    - iii. [Post-war order](#)
    - iv. [Wars after the War, 1919–1921](#)
  5. [Resources](#)
    - i. [Primary sources](#)
      - a. [Poland](#)
      - b. [Russia](#)
      - c. [Germany \(Prussia\)](#)
      - d. [Austria \(Austria-Hungary\)](#)
      - e. [U.S.](#)
      - f. [Great Britain](#)
      - g. [France](#)
      - h. [Ukraine](#)
      - i. [Belarus](#)
      - j. [Lithuania](#)

- Visualizations:** A right-hand panel with two charts. The top chart, 'Most Common Place', shows a bar chart for 'Baranovichi' (1 doc). The bottom chart, 'Most Recent', shows a timeline from 1795 to 1920, with a peak at '11/07/1920' (1920-11-7) and 'Oldest' at '1795' (1795-10-24). Below this is a map of Europe with blue dots indicating locations, also for 'Baranovichi' (1 doc).

At the bottom left, there is a link for 'About CENDARI'.



Sites Search

Simple search Shelfmark **Advanced search** OntoQuery

Dates: <input type="text" value="select:"/>	Place names	Copyst
from: <input type="text"/> to: <input type="text"/>	<input type="text"/>	<input type="text"/>
Author	Title	Incipit
<input type="text"/>	<input type="text"/>	<input type="text"/>

TRAME: Texts and Manuscript Transmission of the Middle Ages in Europe  
(Fondazione Ezio Franceschini and SISMELE)

Sort by:

alphabetical last updated

My resources:

My projects

- andreizamoiski
- aprojectwithouthusername
- caterinamenichetti
- francescamorselli
- irenetani
- jakubbenes
- joerglehmann
- kathleenwalkermeikle
- Notes (1)
  - ARG: Transcribing Medieval Manuscripts and Archival Material
- Documents (0)
- Entities (6)
  - lidiabuono
  - lorenzatromboni
  - martinhlouch
  - robertagiacomi
  - rolandsczok
  - silvianocentini
  - tomasklimek

## Note 631: ARG: Transcribing Medieval Manuscripts and Archival Material



always, adopt a convention when transcribing dates and make it clear to any future readers whether you are printing or transcribing the dates as written or are converting them.

## Non – Latin medieval scripts

When transcribing non - Latin letters onto the NTE, use Unicode characters if you do not have the font available. Apart from non - Latin alphabets (Armenian, Greek, etc.), Unicode characters may be needed for particular letters in some Latin alphabets. For example in Old Norse or Old English, the characters thorn or æth can be transcribed using Unicode. The [Medieval Unicode Initiative](#) is focused on encoding special medieval characters.

## Importing transcriptions onto the NTE

Apart from uploading images of manuscript material and transcribing directly onto the NTE, it is also possible to import transcriptions. The user could import these transcriptions by a simple copy and paste, but online transcription software is available that allows the importation of transcribed text in html code onto the NTE.

[T-Pen, a free web-based tool developed by St Louis University](#), allows the user to attach new or imported transcription data line-by-line to uploaded manuscript images. The transcribed html text can then imported onto the NTE. Xml tagging of elements of interest in the transcription is also possible. [Transcript 2.5](#) is another online tool for digital transcription, although unlike T-Pen the transcription is not done line-by-line. Another tool that could be useful is [IIF - Mirador](#), an open-source web-based viewer which allows the user to display and compare simple images and annotate them.

## Editing medieval manuscripts

After having transcribed the text, medieval scholars might have to collate a number of different manuscript witnesses of the same text. The edited text can then be uploaded to the NTE. Several tools are available for editing medieval manuscripts:

[Tradamus](#) is a free digital critical edition creation web application, developed by the same team behind T-Pen, St Louis University. Transcriptions can be imported in a variety of formats and can be fully TEI encoded. Witnesses can be annotated and collated, commentary and editorial material can be added, and multiple users can collaborate on the text. The final edition can be exported in multiple formats (XML, TXT and JSON).

[Classical Text Editor](#) is a licensed software application developed by the Austrian Academy of Science and the Corpus [Scriptorum Ecclesiasticorum Latinorum](#). It helps the user create critical editions, commentaries and parallel texts, notes and apparatus, which can be exported in HTML format. Another possible option for digital editing is [TextGrid](#). Other available software for collating texts are [Collatex](#) and [Junta](#).



<https://notes.cendari.dariah.eu/cendari/joerglehm/notes/342/>

**CENDARI**  
 COLLABORATIVE EUROPEAN DIGITAL ARCHIVE INFRASTRUCTURE

Home Browse About Issue Report Survey Search joerglehm ▾

**Resources**

Sort by: **alphabetical** creation last updated

My resources:

- My projects
  - andreizamoiski
  - caterinamenichetti
  - francescamorselli
  - irenetani
  - jakubbenes
  - joerglehm
  - Notes (62)
  - Documents (0)
  - Entities (6)
  - robertagiacom
  - rolandsczok

New Save Read Mode Delete

Note Description [ Read Only ] --- click here for Edit mode

Note's title  
ARG Science and Technology in the First World War

Note's content

Font Size **B** *I* U ABC

**Science and Technology in the First World War**  
 Picture to be added (functionality not yet there)  
 Author(s) Jörg Lehmann  
 Theme(s) World War I  
 Period(s) 1909-1938  
 Status draft version

**Author**  
Jörg Lehmann

**Abstract**  
 The subject "Science and Technology in the First World War" has so far been treated from the perspective on inventions and the development of new weapons, and it has often been reduced to the topic of chemical warfare. The approach of this Archival Research Guide comes from the social sciences and focuses on the establishment of relevant scientific, military and governmental bodies and on the personal networks established during the war. This approach enables transnational perspectives and comparisons and takes the role of intellectuals into account, for whom scientific objectivity / neutrality and patriotic commitment seemed to have been no contradiction. It is remarkable that the First World War has led to the establishment of several institutions aiming at funding science through the state, most notably in the case of France (CNRS), the U.S. (NACA/NASA) and Russia (KEPS).

**Introduction**

**Visualizations**

Most Common Person **Roman Dmowski** 3 docs

Most Common Place **Baranovichi** 1 doc

Most Recent **11/07/1920** 1920-11-7

Oldest **1795** 1795-10-24

Most Common Place **Baranovichi** 1 doc

# Archival Research Guides in the NTE

## List of CENDARI Archival Research Guides

- (WWI 1) Jakub Benes / Workers' Movements
- (WWI 2) Alexandra Pawliczek / Parallel Records
- (WWI 3) Alexandra Pawliczek / National Narratives
- (WWI 4) Andrei Zamoiski / Jews of Eastern Europe
- (WWI 5) Anna Bohn / Romanov Dynasty
- (WWI 6) Francesca Morselli / Private Memories
- (WWI 7) Pavlina Bobic / Coercion and Consent
- (WWI 8) Andrei Zamoiski / Islamic Movements
- (WWI 9) Francesca Morselli / Industrial Development
- (WWI 10) Jakub Benes / East Central European States
- (WWI 11) Pavlina Bobic / Prisoners of War
- (WWI 12) Pavlina Bobic / Injury and Disease
- (WWI 13) Andrei Zamoiski / Emerging States
- (WWI 14) Francesca Morselli / Women during WW1
- (WWI 15) Jörg Lehmann / Science and Technology
- (WWI 16) Kathleen Walker-Meikle & Jörg Lehmann & Francesca Morselli & Andrei Zamoiski / Methodological Guide on AtoM Sources
- (MM 1) Zdeněk Uhlíř & Martin Hlouch / Medieval Preaching in Central European Sources
- (MM 2) Miroslava Hejnová & Tomáš Klimek / Sources for Medieval Geography and Natural History in Central Europe
- (MM 3) Anna Benvenuti, Emiliano Degl'Innocenti, Roberta Giacomi, Vinicio Serafini / Dispersed Medieval Monastic Archives
- (MM 4) Lorenza Tromboni / Dominican Lectores in Florence
- (MM 5) Irene Tani / Italian Books of Poetry
- (MM 6) Caterina Menichetti / Italian Vernacular Bibles
- MM 7) Silvia Nocentini, Lidia Buono, Eugenia Russo / Homiliaries
- (MM 8) Silvia Nocentini / Medieval Collections of Saints Lives
- (MM 9) Kathleen Walker-Meikle / Digital resources for transcribing manuscripts

## Browse by

- Archival descriptions
- Archival institutions
- Subjects
- Places

## Popular this week

- American Jewish Committee Library and Archives **34 visits**
- Bolnišnica Golnik - Klinični oddelek za pljučne bolezni in alergijo **24 visits**
- Pokrajinska uprava za Slovenijo, Oddelek za socialno skrbstvo **24 visits**
- Lietuvos valstybės istorijos archyvas **22 visits**
- Biblioteca Apostolica Vaticana, Città del Vaticano **22 visits**
- Mestna občina Maribor 1528-1941 **21 visits**
- Vojne srote, razpis mest na mornariški akademiji, ukrepi za zaščito uradnih poslopij ob bombardiranju, vojni spomeniki, cenzura, internirani avstrijski državljani, vojaška oprema v rokah civilov, mirovna pogodba, vpis na vojaško akademijo **20 visits**
- Nachlass Oskar Messter **20 visits**
- Demobilizacija/ menjava denarja/ policijske zadeve/ preskrba z gorivom/ ruski ujetniki/ seznam vojnih posojil po občinah/ zaplembe blaga/ seznam posestnikov, ki so 1917 vozili primorske begunce iz občine Trata v Škofjo Loko **20 visits**
- Obča državna bolnica v Ljubljani **19 visits**

The Archival Directory is a large database of archival descriptions and collections and is part of the CENDARI Virtual Research Environment.

It has a strong transnational focus and one of its aims is to include many archives and institutions which are little known or rarely used by researchers. The Archival Directory allows historians to view sources in a rarely seen transnational and comparative view. It is focused on archives and libraries containing resources on the **Medieval era** and **World War One**.

[Searching for records in the CENDARI Archival Directory](#)

[Frequently asked questions](#)

[About CENDARI Archival Directory](#)



### Join Us!

To access and contribute content to the Archive Directory tool, join our [Trusted Users Group](#) (opens new window).

We hope that researchers, historians and archivists will find this opportunity to be of interest. Potential members of the TUG are asked to submit a short statement of interest via [TUG registration form](#) (opens new window) or if you prefer, you may send a [CV](#) instead.



### Take notes for your research

If you wish to work on your own research project, upload and annotate your data, you may take a look at the [CENDARI Note Taking Environment](#) (opens new window).

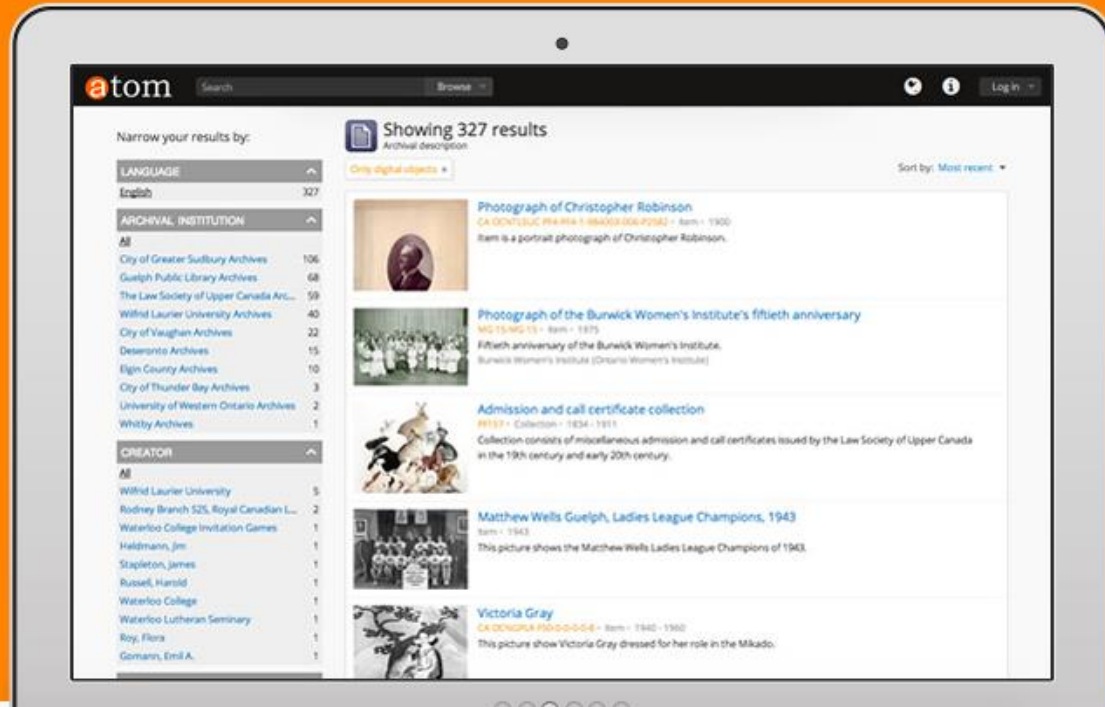
# ARCHIVAL DIRECTORY



- Home
- Downloads
- Documentation
- Community
- News
- Wiki
- Demo

# Providing access to memory since 2007

AtoM stands for **Access to Memory**. It is a web-based, open source application for standards-based archival description and access in a multilingual, multi-repository environment.



## AtoM: Access to Memory (Open Source Archival Description Software)

## **Criteria for selecting archival institutions for inclusion in the Archival Directory**

### *World War I archival institutions selection criteria:*

- All countries that participated in the First World War are included .
- Special attention given to records in Eastern and South East Europe
- Archival institutions with significant holdings are described.
- Archival institutions that have digitized a large part of their collections.

### *Medieval Culture archival institutions selection criteria:*

- Archival institutions in most Western countries, including the USA and Australia.
- Special attention paid to archives in Eastern and South East Europe.
- Collections of great interest to the academic community.
- Archival institutions that have digitized a large part of their collections.



← → ↻ <https://archives.cendari.dariah.eu/index.php/belgium> ★

**atom** CENDARI Archival Directory

This is the archival directory of the CENDARI project

Treeview | List | Search

**PLACES**

- ...
- [Baden-Baden](#)
- [Balkans](#)
- [Barcelona](#)
- [Basel](#)
- Belgium
- [Belluno](#)
- [Bergamo](#)
- [Bern](#)
- [Bohemia](#)
- ...

**SUBJECT** ^

- All
- [World War, 1914-1918](#) 4
- [Modern History](#) 2
- [Poetry](#) 2
- [Theology](#) 2
- [Religious Literature](#) 2
- [Ethics](#) 1
- [Travel Literature](#) 1
- [Judaism](#) 1
- [Art, Modern](#) 1
- [Music](#) 1

**LANGUAGE** ^

- Unique records 8
- [English](#) 8

## Belgium

Taxonomy | Places

8 Results for Belgium

Sort by: [Alphabetic](#) ▾

8 results directly related

[Brochures and pamphlets for the history of Belgium in World War I](#)  
BE a0546 · Collection · 1914 - 1918  
 The Royal Library of Belgium has made available valuable brochures, leaflets and pamphlets that are part of Belgium's history during the first world war. These digitized documents trace the country's role from the German invasion in 1914, to the c...  
Koninklijke Bibliotheek België

---

[Carolingian manuscripts from the Royal Library of Belgium](#)  
BE a1029 · Collection · 7th-14th centuries  
 Within the scope of the Europeana Regia project the Royal Library of Belgium has digitized 30 Carolingian manuscripts dated from the late 7th to 10th centuries. The manuscripts were made in different centers throughout the realm and contain works ...  
Bibliotheque royale de Belgique

---

[Manuscripts and old printed books cultural heritage of Flanders](#)  
BE a1058 · Collection · From the 12th to the 19th centuries  
 The Ghent University Library holds a considerable number of precious masterpieces. A short list of items which are extremely valuable to Flanders have been recognized as cultural heritage by the Flemish government. In order to make them accessible...  
Universiteitsbibliotheek Gent

---

[Musical Life in Belgium during the First World War at the Royal Library of Belgium](#)  
BE a0545 · Collection · 1914 - 1918  
 The music division of the Royal Library of Belgium is considered the most important Institute for the preservation of music-related materials in the country. Within the context of the Europeana Collections 1914-1918 the Library has made available ...  
Koninklijke Bibliotheek België

---

[Photographs of the military campaign of the Belgian Congo \(1916-1918\)](#)  
BE a0648 · Collection · 1916 - 1918

Export

SKOS

Results

8

No. narrower terms

0

# Searching in the Archival Directory

**atom** CENDARI Archival Directory

This is the archival directory of the CENDARI project

Narrow your results by:

**Showing 1146 results**  
Archival institution

Search archival institution   Sort by: **Alphabetic**

**LANGUAGE** ^

- [Unique records](#) 1146
- [English](#) 1144
- [Italian](#) 4
- [Dutch](#) 3

**ARCHIVE TYPE** ^

- [All](#)
- [National](#) 112
- [Provincial/state](#) 41
- [Municipal](#) 28
- [Regional](#) 27
- [Religious](#) 23
- [University](#) 12
- [Private](#) 2
- [Educational](#) 1
- [International](#) 1

**GEOGRAPHIC REGION** v

**GEOGRAPHIC SUBREGION** v

**LOCALITY** v

**THEMATIC AREA** v

<p><b>Archivio di Stato di Torino</b></p> <p>Archivio di Stato di Torino</p>	<p><b>Archivio di Stato di Venezia</b></p> <p>Archivio di Stato di Venezia</p>	<p><b>Archivio e Biblioteca Capitolare di Vercelli</b></p> <p>Archivio e Biblioteca Capitolare...</p>	<p><b>Archivio storico civico e Biblioteca trivulziana</b></p> <p>Archivio storico civico e Bibliote...</p>
<p><b>Archivo Capitular de Barcelona</b></p> <p>Archivo Capitular de Barcelona</p>	<p><b>Archivo Catedralicio de Burgos</b></p> <p>Archivo Catedralicio de Burgos</p>	<p><b>Archivo Catedralicio de Córdoba</b></p> <p>Archivo Catedralicio de Córdoba</p>	<p><b>Archivo Catedralicio de Huesca</b></p> <p>Archivo Catedralicio de Huesca</p>
<p><b>Archivo Catedralicio de Tortosa</b></p> <p>Archivo Catedralicio de Tortosa</p>	<p><b>Archivo Histórico Nacional</b></p> <p>Archivo Histórico Nacional</p>	<p><b>Archivo de la Corona de Aragón</b></p> <p>Archivo de la Corona de Aragón</p>	<p><b>Archivo de la Real Chancillería de Valladolid</b></p> <p>Archivo de la Real Chancillería ...</p>
<p><b>Archivo del Reino de Valencia</b></p> <p>Archivo del Reino de Valencia</p>	<p><b>Archiwum Akt Nowych w Warszawie</b></p> <p>Archiwum Akt Nowych w Warsz...</p>	<p><b>Archiwum Główne Akt Dawnych w Warszawie</b></p> <p>Archiwum Główne Akt Dawnych w Warszawie</p>	<p><b>Archiwum Narodowe w Krakowie</b></p> <p>Archiwum Narodowe w Krakowie</p>

## Browsing by Archival Institutions

This is the archival directory of the CENDARI project



## The British Red Cross museum and archives

Archival institution > The British Red Cross museum and arc...

Identity area	
Authorized form of name	The British Red Cross museum and archives
Contact area	
Address	Street address: 44 Moorfields Locality: London Country name: United Kingdom Postal code: EC2Y 9AL
Telephone	020 7877 7058
Email	<a href="mailto:enquiry@redcross.org.uk">enquiry@redcross.org.uk</a>
Description area	
Holdings	Records of the world wars During both world wars, the Red Cross combined with the Order of St John to carry out relief work at home and overseas in the most efficient and economical way. Information about this work is available in published form. We hold ... <a href="#">»</a>
Finding aids, guides and publications	<a href="http://www.redcross.org.uk/About-us/Who-we-are/Museum-and-archives/Online-exhibitions/First-World-War-photos">http://www.redcross.org.uk/About-us/Who-we-are/Museum-and-archives/Online-exhibitions/First-World-War-photos</a>
Control area	
Institution identifier	FUB
Sources	<a href="http://www.redcross.org.uk/museumandarchives">http://www.redcross.org.uk/museumandarchives</a> <a href="http://www.nationalarchives.gov.uk/archon/searches/locresult_details.asp?LR=2152">http://www.nationalarchives.gov.uk/archon/searches/locresult_details.asp?LR=2152</a>
Maintenance notes	Anna, Bohn

### Primary contact

44 Moorfields  
London  
GB EC2Y 9AL

[Website](#) [Email](#)

# Archival Institution

The National Archives,  
Kew, UK

## Fonds AIR 1/656/17/122/541 - Advisory committee on aeronautics

Holdings Quick search

Fonds AIR 1/656/17/122/541 - A...

Identity area	
Reference code	GB GB66 AIR 1/656/17/122/541
Title	Advisory committee on aeronautics
Date(s)	• 1912 (Creation)
Level of description	Fonds
Context area	
Name of creator	<a href="#">Air Ministry</a>
Repository	<a href="#">The National Archives, Kew, UK</a>
Immediate source of acquisition or transfer	Former reference in its original department A.H.B. Reference 17/122/541
Conditions of access and use area	
Language of material	• English
Script of material	• Latin
Access points	
Name access points	• <a href="#">Air Ministry (Creator)</a>
Description control area	
Sources	<a href="http://discovery.nationalarchives.gov.uk/details/r/C4081575">http://discovery.nationalarchives.gov.uk/details/r/C4081575</a>

 [Reports](#)

### Export

 [Dublin Core 1.1 XML](#)

 [EAD 2002 XML](#)

### Related people and organizations

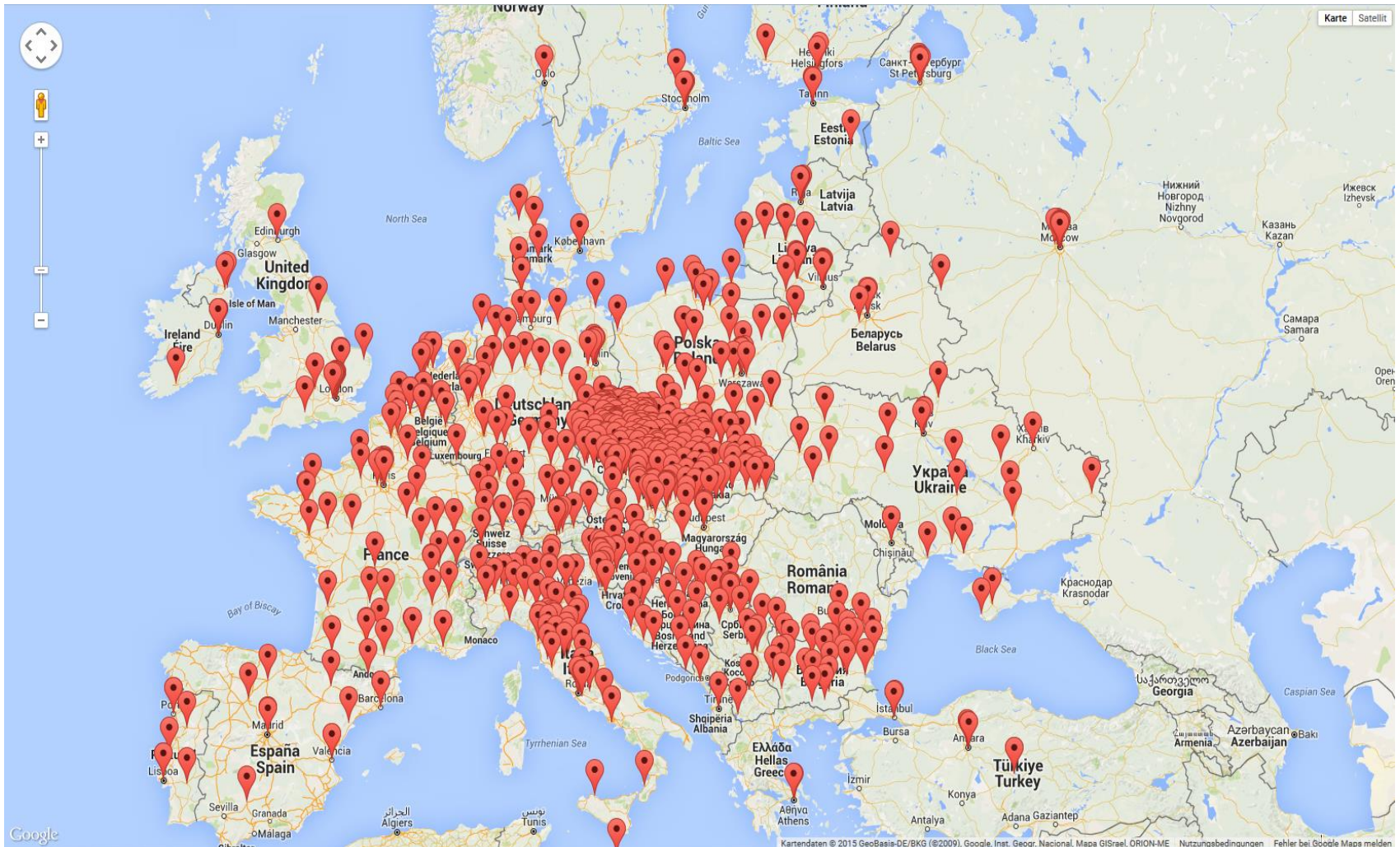
[Air Ministry \(Creator\)](#)

# Archival Description



Worldwide distribution of institutions in the Archival Directory

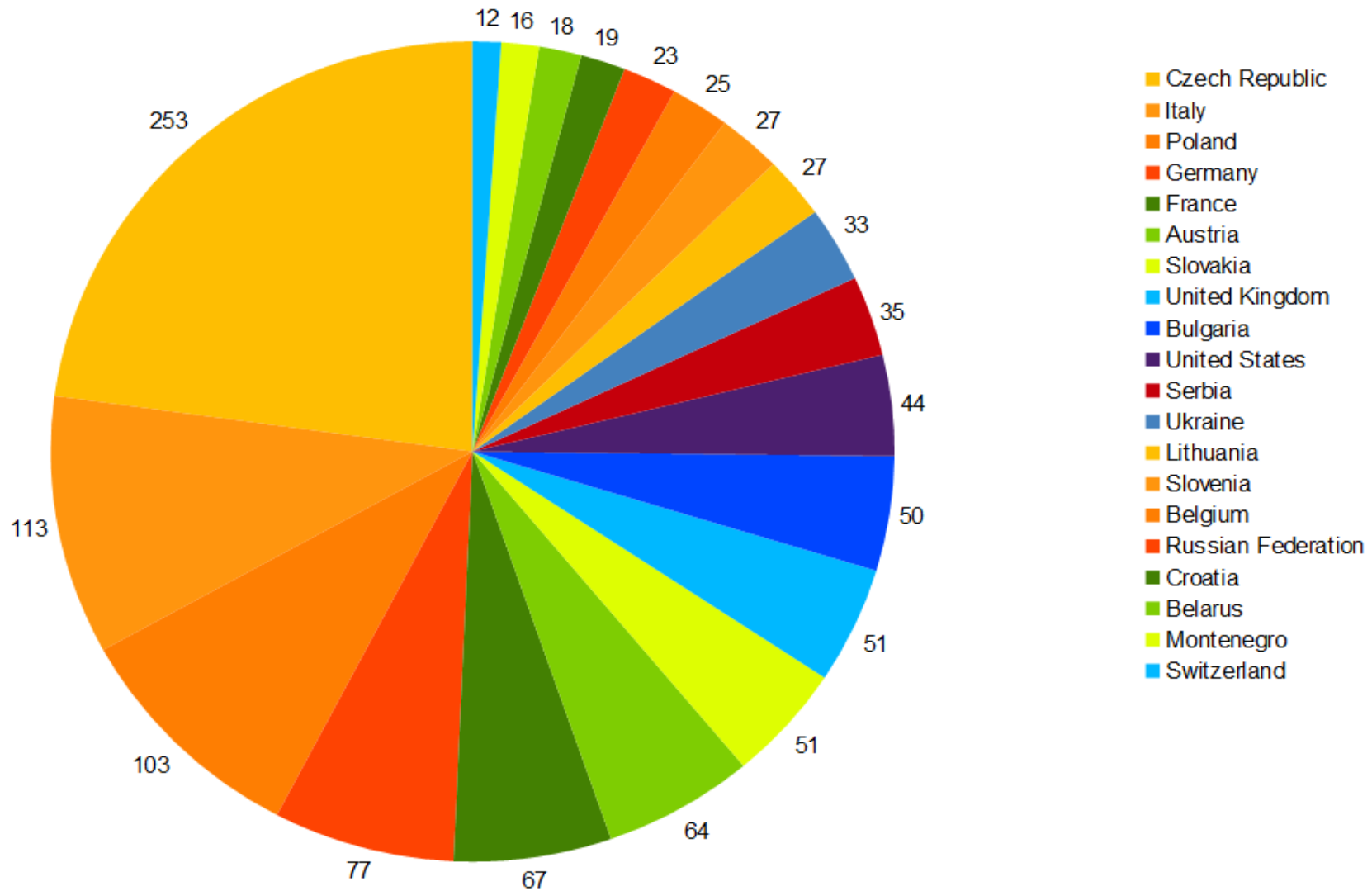




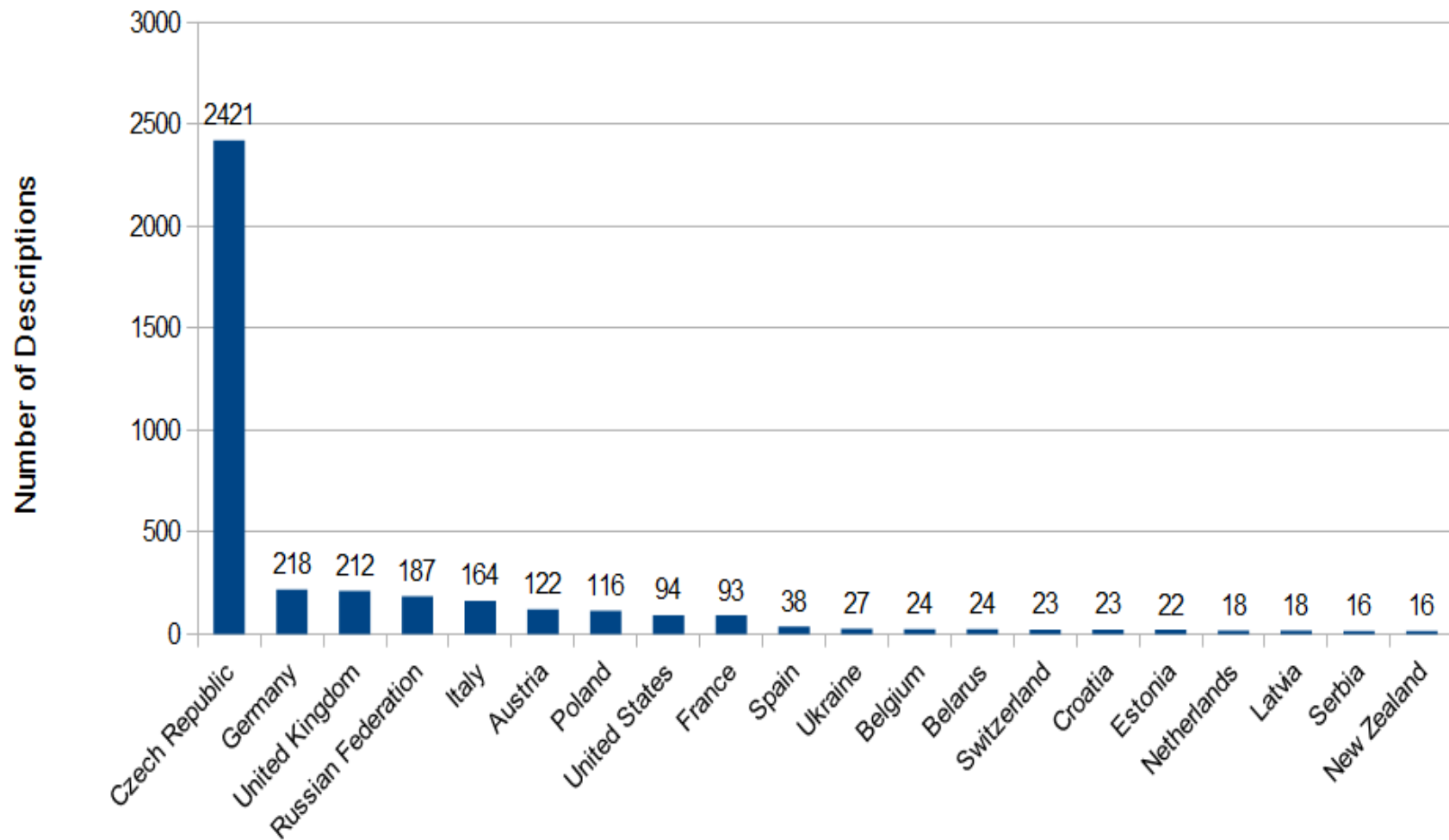
Distribution of institutions within Europe

# Archival Institutions per Country

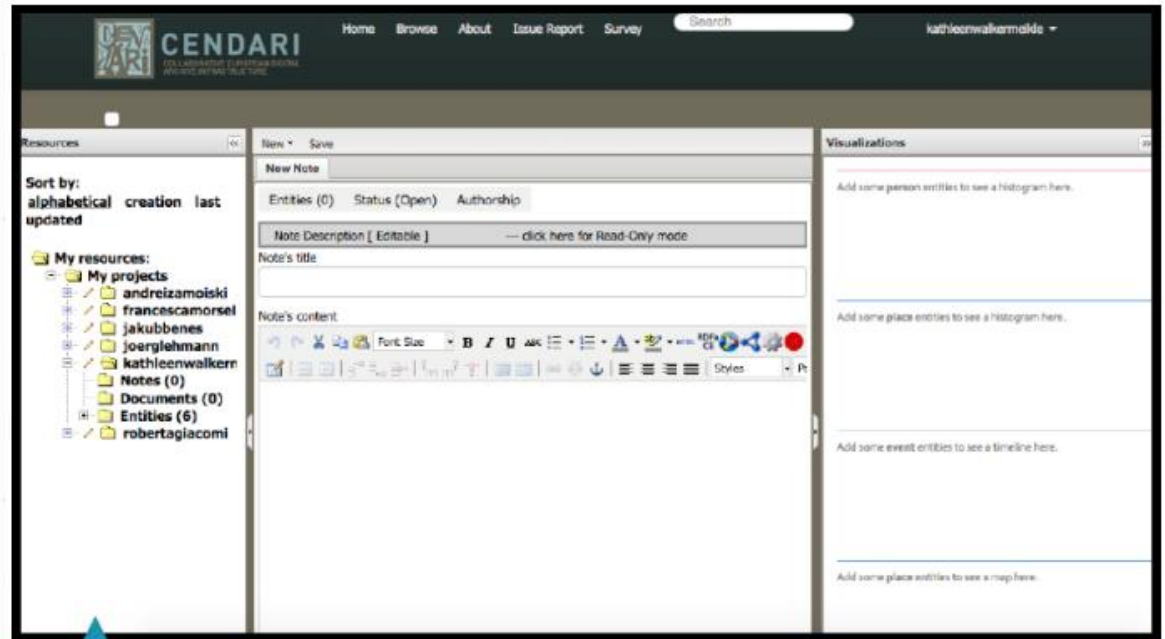
(20 Countries with Biggest Number of Institutions)



# Archival Descriptions per Country



## Working with the NTE



The Note Taking Environment consists of three columns. On the left are your resources, where you can see your notes,

Documentation for users

# notes.cendari.dariah.eu

← → ↻ <https://ldap-dariah.esc.rzg.mpg.de/idp/Authn/UserPassword>



Log in to CENDARI FrontOffice

Login

 CENDARI FrontOffice – Service provided by DARIAH

- Contact
- Request an Account
- Edit your User Data
- Forgot your Password?
- DARIAH-DE Portal





# TUG

(Trusted Users Group)



## JOIN CENDARI NOW!

Ask not what you can do for CENDARI but what  
CENDARI can do for you

## Involving Users in the Design

- Participatory Design Workshops  
(2012 – 2013: Paris, Florence, Berlin)
- User stories
- CENDARI Research Fellows
- CENDARI Outreach Workshops  
(Stuttgart, Florence, Ghent 2015)
- CENDARI Expert Seminars  
(Berlin, The Hague, Florence 2015)
- TRUSTED USER GROUP:
  - Creation of a user base (+100)
  - Programme based on  
development schedule (aim to  
release one tool or component  
per month)
  - Training material
  - Basecamp forum
  - Training videos
  - Webcasts
  - Survey
  - Feedback to developers



LAUNCH 14 January 2016